






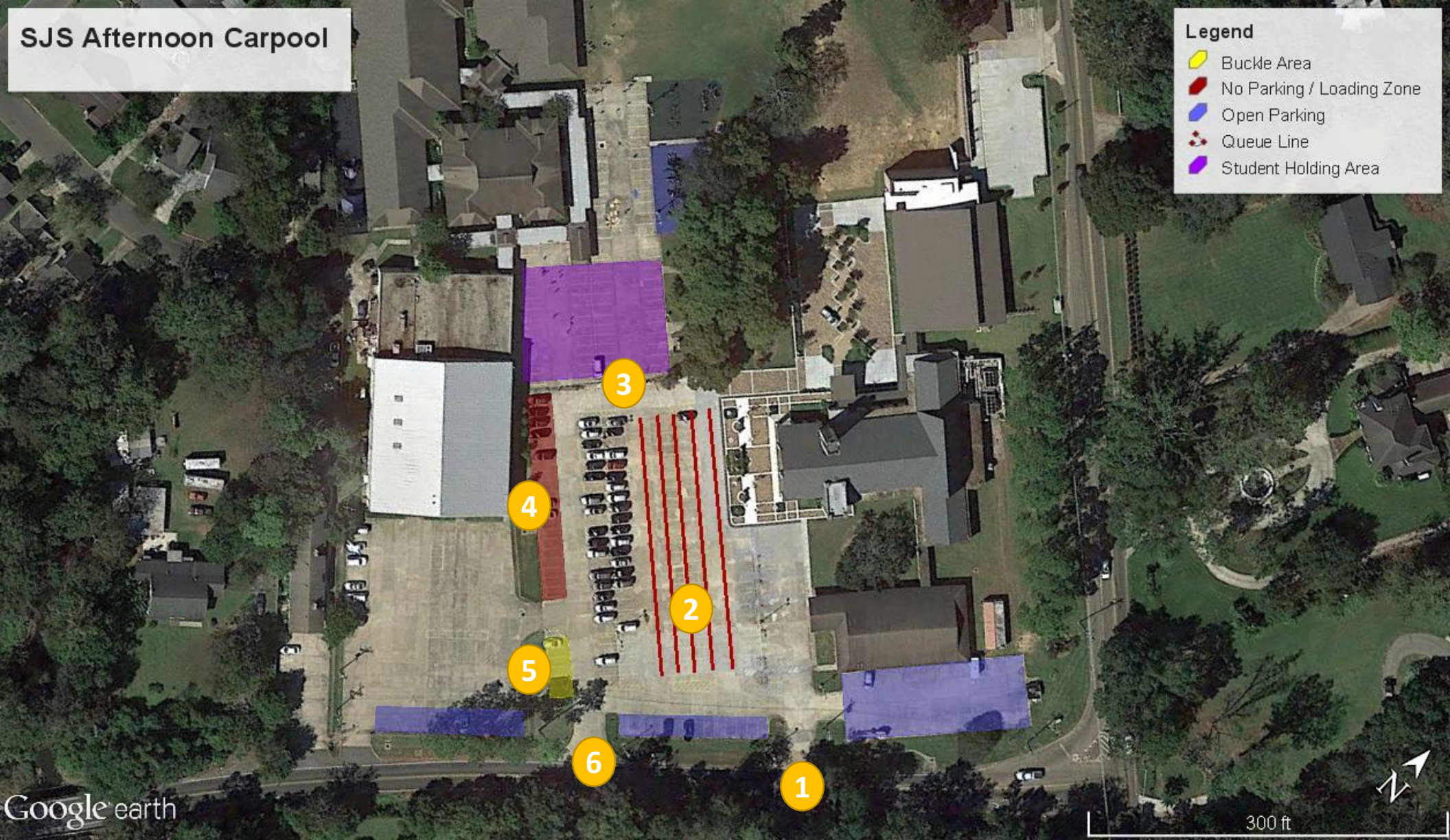
SJS Afternoon Carpool

Legend

-  Buckle Area
-  No Parking / Loading Zone
-  Open Parking
-  Queue Line
-  Student Holding Area

NEW CARPOOL PROCEDURES

- 1** Enter the parking lot from Gardere Lane (left OR right turns in allowed.)
- 2** Line up in parallel lines just as is procedure for morning drop off. Please pull up directly behind the car in front of you leaving minimal space. Place your car in PARK until Carpool Operations begin.
- 3** When directed by a staff member, move forward to loading zone.
- 4** Loading Zone: Student will meet vehicle here Staff will assist children in getting into vehicles. Parking in this area prohibited from 2:00-3:30 PM.
- 5** SJS Staff CANNOT buckle your child's seatbelt or carseat straps. If you have a child in a carseat or who needs help bucking, PLEASE use these spaces to pull over and assist your child before exiting the lot



IMPORTANT PROCEDURES AND REMINDERS:

- NO cell phone use is permitted during carpool operations.
- Drivers must be licensed; no learners permits allowed.
- Parking during the school day is ONLY allowed in the **BLUE** areas; Parking is permitted in the **RED** area before 2:00 PM.

- 6** Exit campus via a **RIGHT TURN ONLY** onto Gardere Lane. Left turns will be **PROHIBITED** during all Carpool Operations.